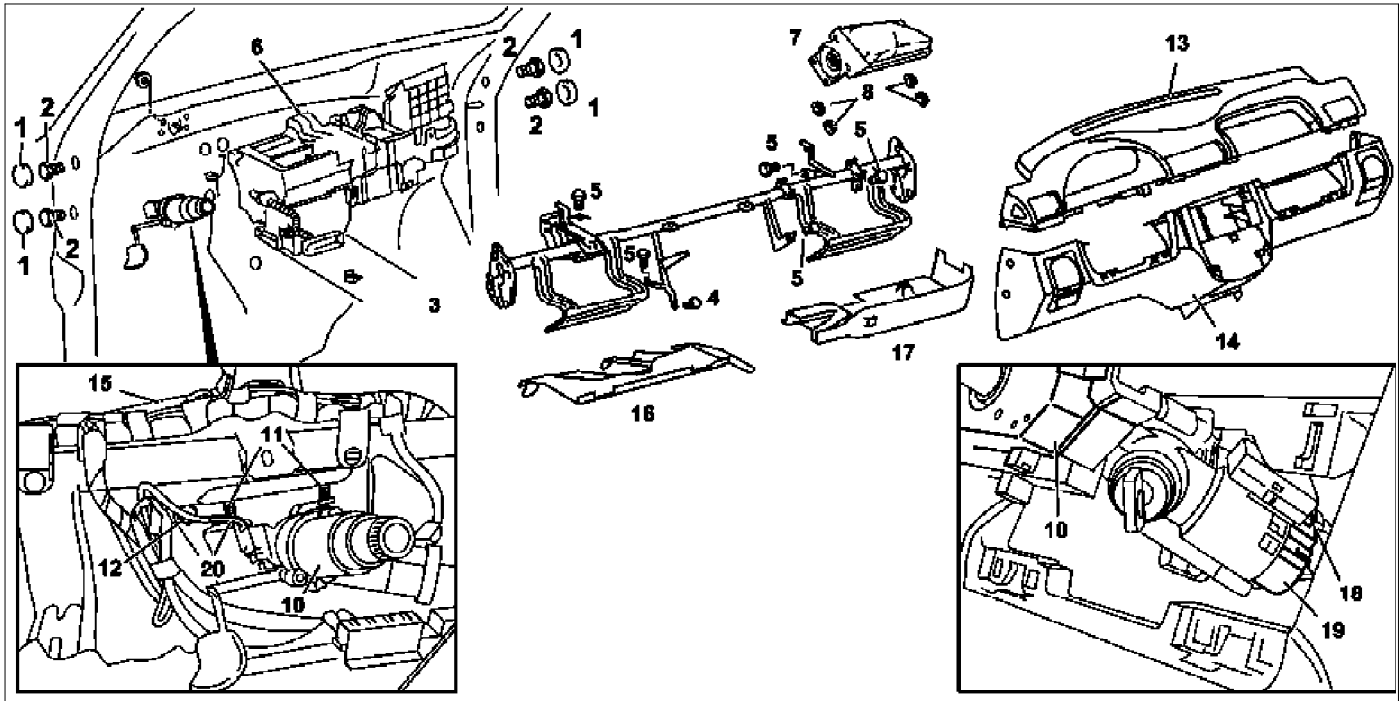


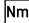
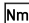




MODEL 163.113 /128 /136 /154 /157 /172 /174 /175



P68.10-0612-09

- | | | | | | |
|---|-----------------------------|----|--------------------------------------|----|---|
| 1 | Caps on A-pillar | 10 | Steering column | 17 | Cover below instrument panel on right |
| 2 | Bolts | 11 | Bolts | 18 | Connector on MB immobilizer switch |
| 3 | Instrument panel | 12 | Nuts | 19 | Connector at steering/ignition lock |
| 4 | Bolt | 13 | Instrument panel | 20 | Steering column adjustment switch connector |
| 5 | Bolts | 14 | Bottom section of instrument panel | | |
| 6 | Heater housing | 15 | Wiring harness | | |
| 7 | Front passenger airbag unit | 16 | Cover below instrument panel on left | | |
| 8 | Nuts, self-locking | | | | |

 	Remove/install		
1	Remove instrument panel (13) and the lower part of instrument panel (14)		AR68.10-P-1000GH
2	Remove passenger airbag (7)		AR91.60-P-0680GH
3	Remove cover below instrument panel on right (17)	Up to chassis number A145272, X708318.	AR68.10-P-1520GH
		As of chassis number A145273, X708319.	AR68.10-P-1520GI
4	Unscrew screws (5) from instrument panel carrier (3) on heater housing (6)		
5	Remove cover below instrument panel on left (16)		AR68.10-P-1500GH
6	Remove insulating mat between steering column (10) and carrier for instrument panel (3)		
7	Unscrew screws (11) for steering column (10) from instrument panel carrier (3)		*BA46.10-P-1006-03C
8	Remove nuts (12) for steering column (10) from instrument panel carrier (3)		*BA46.10-P-1007-03C
9	Unscrew screws (4) for instrument panel carrier (3) from middle tunnel		
10	Disconnect connector from steering column height adjustment switch (20)		
11	Disconnect connector from MB immobilizer switching unit (18)		
12	Disconnect connector from steering/ignition switch (19)		
13	Disconnect wiring harness (15) from instrument panel carrier	 Installation: Ensure that wiring harness is routed correctly on instrument panel carrier.	
14	Remove wiper system		AR82.30-P-6400GH
15	Unscrew nuts for instrument panel carrier (3) on firewall	 Installation: Install new self-locking nuts.	
16	Remove caps on A-pillar (1)		

17	Unscrew screws (2) for instrument panel carrier (3) from A-pillar		
18	Remove instrument panel carrier (3) and take out of passenger compartment to side through passenger door	ⓘ Be careful not to damage center console when removing and installing.	
19	Install in the reverse order		

Nm Jacket tube

Number	Designation		MODEL Series 163
BA46.10-P-1006-03C	Screw for jacket tube on upper instrument panel carrier	Nm	20
BA46.10-P-1007-03C	Jacket tube collar nut on instrument panel carrier at bottom	Nm	18