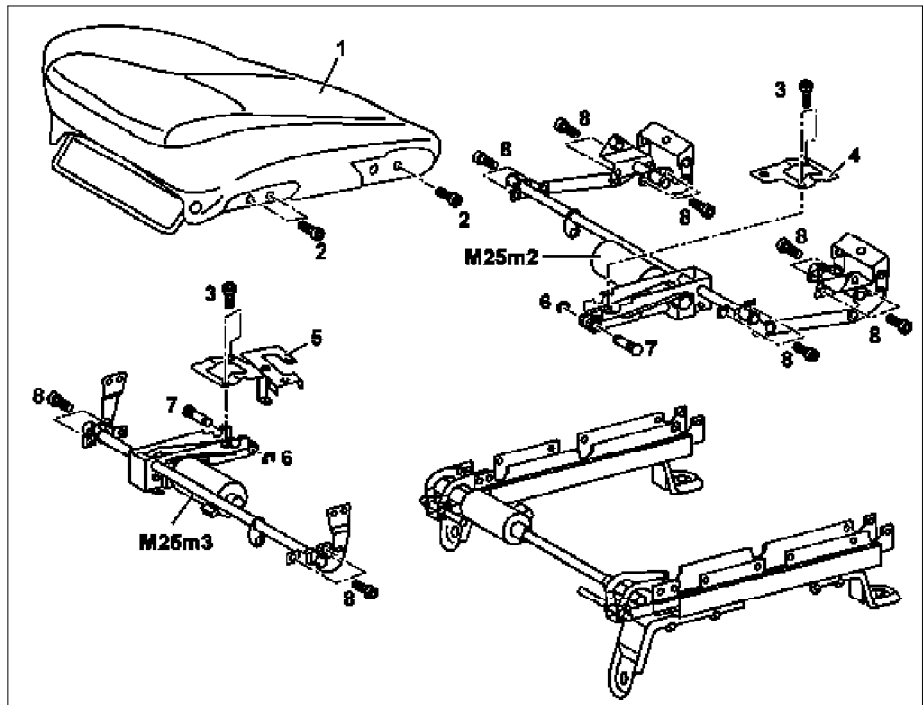


**MODEL 163 with CODE (221b) Electrically adjustable left and right front seats**





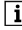
- 1 Seat cushions  
 2 Screws  
 3 Screws  
 4 Front bearing plate  
 5 Rear bearing plate  
 6 Snap rings  
 7 Bearing pin  
 8 Screws  
 M25m2 Rear up/down motor  
 M25m3 Front up/down motor

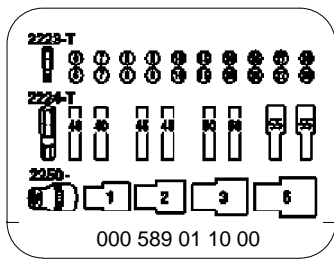


P91.29-0333-06

**Operation no. of operation texts or of standard texts and flat rates**

Division	Operation no.	Operation text
P	916008	REMOVING DRIVE MOTOR FOR DRIVER'S SEAT LONGITUDINAL ADJUSTMENT (SEAT REMOVED)
P	916013	REMOVING DRIVE MOTOR FOR DRIVER'S SEAT HEIGHT ADJUSTMENT (SEAT REMOVED)
P	916058	REMOVING DRIVE MOTOR FOR PASSENGER SEAT LONGITUDINAL ADJUSTMENT (SEAT REMOVED)
P	916063	REMOVING DRIVE MOTOR FOR PASSENGER SEAT HEIGHT ADJUSTMENT (SEAT REMOVED)

	Removal, installation		
1	Remove front seat backrest		AR91.10-P-1060GH
2	Unscrew screws (2) on seat frame	 Torx bit set	*000589011000
3	Remove seat cushion (1) from seat adjustment mechanism		
4	Disconnect connectors from adjustment motors (M25m2, M25m3)		
5	Unscrew screws (3) on bearing plates (4, 5)	 Torx bit set	*000589011000
6	Remove bearing plates (4, 5)		
7	Remove snap rings (6) on bearing pins (7), press bearing pins out of fork heads		
8	Unscrew screws (8) on shaft bearings	 Torx bit set	*000589011000
9	Remove adjustment motors (M25m2, M25m3)		
10	Install in opposite order		
11	Check for proper function	 See Owner's Manual	



Torx bit set