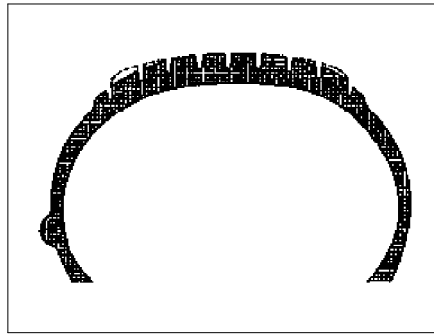


MODEL 123, 124, 126, 129, 140, 163, 168, 170, 171, 201, 202, 203, 208, 209, 210, 211, 215, 220, 230, 240, 414

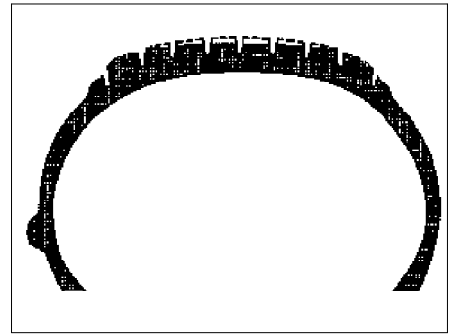
Left diagram

Wear at shoulder of front tires



Right picture

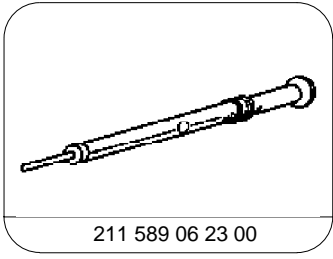
Wear in middle of rear tires



P40.10-0001-01

P40.10-0002-01

	Check		
<p><b>⚠ Danger!</b></p>	<p><b>Risk of death</b> caused by vehicle slipping or toppling off of the lifting platform.</p>	<p>Align vehicle between the columns of the hydraulic hoist and position the four support plates below the hoist support points specified by the vehicle manufacturer.</p>	<p>AS00.00-Z-0010-01A</p>
<p>1</p> <p>f</p> <p>f</p> <p>f</p>	<p>Check tires on all wheels</p>	<p><b>i</b> Check tread as well as outer and inner sidewalls on all tires for signs of damage such as cuts, punctures, cracks, breakouts, separation and ingressed foreign matter. If damage is present #</p> <p>Install new tires:</p> <p>Model 124, 129, 140, 163, 168, 170, 171, 202, 203, 208, 209, 210, 211, 215, 220 except maximum protection code Z07, 230, 240 except CSR system, 414</p> <p>Model 220 with maximum protection, code Z07</p> <p>Model 240 with CSR system</p> <p>Model 123, 126, 201</p>	<p>AR40.10-P-1030A</p> <p>AR40.10-P-1030MB</p> <p>AR40.10-P-1030CSR</p>
<p>2</p> <p>f</p> <p>f</p> <p>f</p>	<p>Check tire wear pattern on all wheels</p>	<p><b>i</b> Greater wear at the shoulder compared to the center of the tire is normal for the front wheel tires. Wear on the rear tires is uniformly distributed across the total tread, whereby wear on vehicles with rear-wheel drive in the middle of the tread is somewhat greater than at the shoulders. In event of unusual tire pattern: #</p> <p>Determine cause for increased tire wear and rectify, then:</p> <p>#</p> <p>Install new tires:</p> <p>Model 124, 129, 140, 163, 168, 170, 171, 202, 203, 208, 209, 210, 211, 215, 220 except maximum protection code Z07, 230, 240 except CSR system, 414</p> <p>Model 220 with maximum protection, code Z07</p> <p>Model 240 with CSR system</p> <p>Model 123, 126, 201</p>	<p>AR40.10-P-1030A</p> <p>AR40.10-P-1030MB</p> <p>AR40.10-P-1030CSR</p>
<p>3</p> <p><b>i</b></p>	<p>Measure the depth of tread of the tires on all the wheels and note the measurement in the table on the maintenance sheet.</p> <p>Information on measuring tire tread depth</p>	<p><b>i</b> Measure depth of tread at point of greatest wear. Perform measurement at outside, inside and center of tread. Minimum depth of tread 1.6 mm.</p> <p><b>i</b> For safety reasons, tires should be replaced before the minimum depth of tread is reached:</p> <p>D Summer tires for approx. 2 to 3 mm depth of tread</p> <p>D Winter tires at approx. 4 mm depth of tread</p> <p><b>🔧</b> Brake pad gauge</p>	<p>AH40.10-P-0006-01T</p> <p>*211589062300</p>
<p>4.1</p>	<p>Change round wheels on front and rear axles</p>	<p>If necessary, and only on vehicles without mixed tires</p>	
		<p><b>⚠</b> Retain running direction of wheels, as otherwise handling performances and comfort may be impaired and tire wear increased.</p> <p>Model 124, 129, 140, 168, 170, 202, 203, 208, 209, 210, 211, 215, 220, 230, 240, 414</p> <p>Model 163</p>	<p>AP40.10-P-4050Z</p> <p>AP40.10-P-4050GH</p>



211 589 06 23 00

Brake pad gage